

16 September 2020

To All Parents & Carers



Hatton Road, Bedfont, Middlesex, TW14 9QZ

Tel: 020 8890 2032/8890

Fax: 020 8893 7450

Email: office@marjorykinnon.hounslow.sch.uk

Web: www.marjorykinnonschool.co.uk

Ms T Meredith - Headteacher

Dear Parents & Carers

I am writing to you to clarify the processes and difficulties we are experiencing at the moment linked to pupils who we have identified as potentially symptomatic and need to send home. I can also update you that we have now had a second confirmed positive test for Covid-19 among staff in the same classroom in Primary. The adults in that class have been self-isolating since before the pupils returned, so no children have been exposed.

If you are called by Senior Leaders or our Medical Officer to collect your child linked to Covid-19 symptoms, you are required to come immediately to collect them and then arrange for a test. I would ask that you do not blame the staff when you speak to them on the telephone or collect your child.

Your child will need to self-isolate for 10 days and get a test before they can return. I understand that it is very difficult to get a test at the moment but we cannot let the pupil return unless he/she tests negative. I understand that this may cause you inconvenience and disruption but we have to follow procedures given to us by Public Health England. All schools are following the same procedures and guidance. If you have children in other schools who are asked to self-isolate, you will also need to do this. As we go through the winter there will be the usual winter bugs and coughs and colds - there may be some confusion between these bugs and Covid-19 symptoms and the only way to be sure and keep all the pupils and staff safe, is for pupils to stay off until you have received (and shared with us) a negative test result.

If your child has been in contact with another family member who has tested positive or has symptoms, they have to self-isolate for 14 days. Please do not send your child to school if you have any doubts or if they are symptomatic, as this is putting the whole class and bubble at risk of an outbreak and possible closure. We can only protect each other and the school community by cooperating with Public Health England's guidelines. With infection rates rising and winter looming we need to expect disruptions - what we don't want to happen is the school needing to close bubbles or Departments.

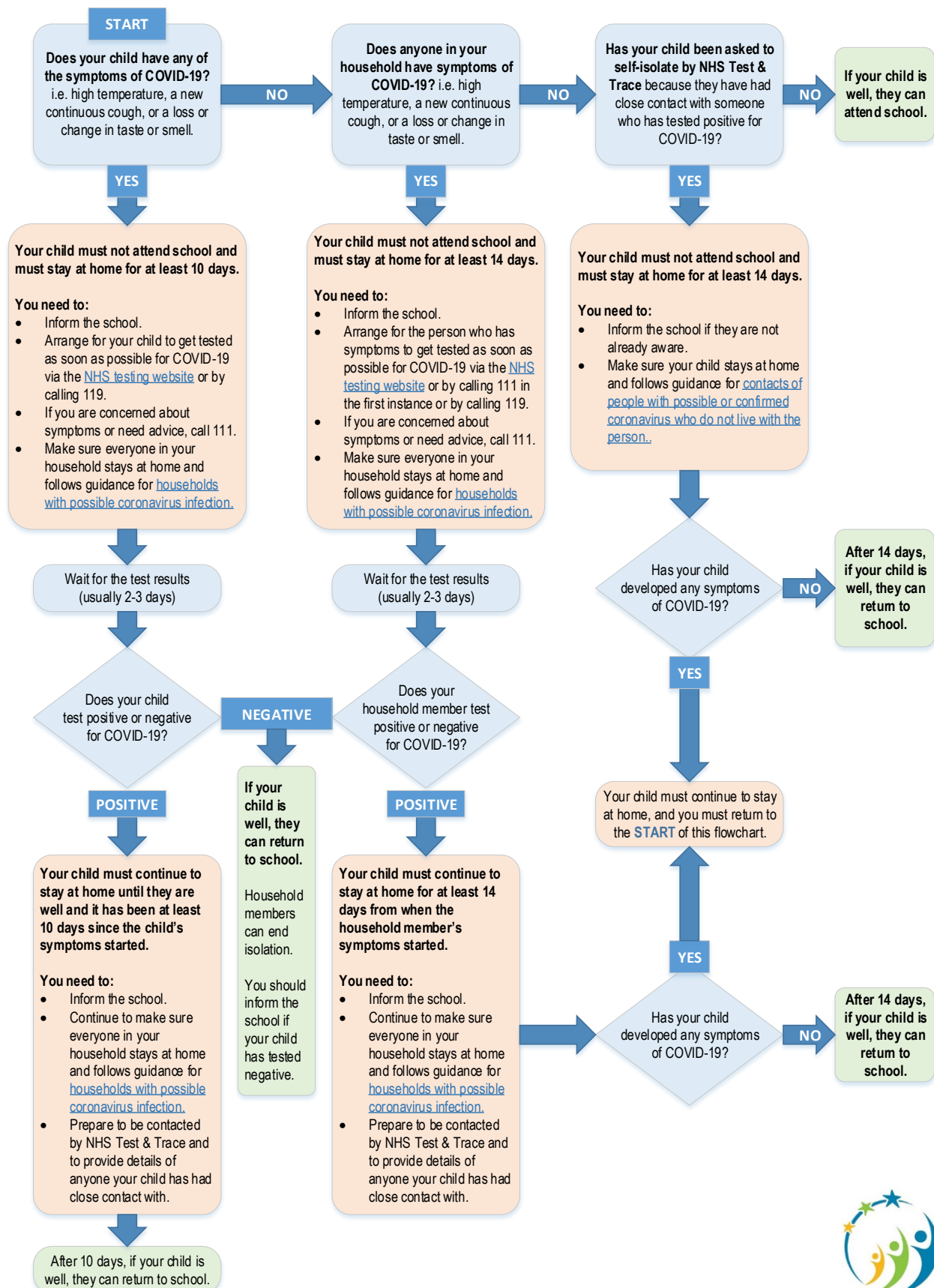
I understand these are difficult times and I will aim to keep communication regular.

Thank you for your cooperation and continued support.

Yours faithfully

Tracy Meredith
Headteacher

Flowchart for Parents/Carers: What to do if someone has symptoms of COVID-19



We put well-being at the heart of everything we do.

Our Vision – Every pupil will learn the skills and develop the confidence needed to become a valued integrated and independent member of their community.

Nurture – Challenge – Inspire

Bulletin for Residents



Got coronavirus symptoms? Get tested now.

NHS Test and Trace is an essential part of the Government's response to stopping the spread of coronavirus and to save lives. Get tested and do your bit to protect your friends and family.

There is a range of local testing options available to you, including a Mobile Testing Site with a mixture of walk-through and drive-through appointments available on:

Saturday 19 September 10.30am - 3.30pm	Syon Park, Brentford, TW8 8JF. (Pedestrians can access the site from London Road). To ensure the safety of Syon Park & House staff and visitors, please remain in your vehicle/ the testing area whilst awaiting a test, and promptly leave the site once your test is completed.
Tuesday 22 September 10.30am - 3.30pm	
Friday 25 September 10.30am - 3.30pm	
Monday 28 September 10.30am - 3.30pm	Private Car park, 274 Hanworth Road, Hounslow, TW3 3TY. (Entrance on Hanworth Rd opposite Passage to India restaurant)

For more information:

https://www.hounslow.gov.uk/info/20007/health_and_adult_social_care/2183/hounslow_mobile_testing_unit_mtu